



LED Back-Lit Flat Panel Light

Long lasting, highly-efficient LED packages. Improve overall energy efficiency. 5 Wattage and 5 CCT switchable.



LED T8 Tube Light(G13)

Type A+B Single or Double Ended Shatterproof Plastic / Anti-deformation Aluminum. 5 Wattage and 5 CCT switchable.



LED Strip Light

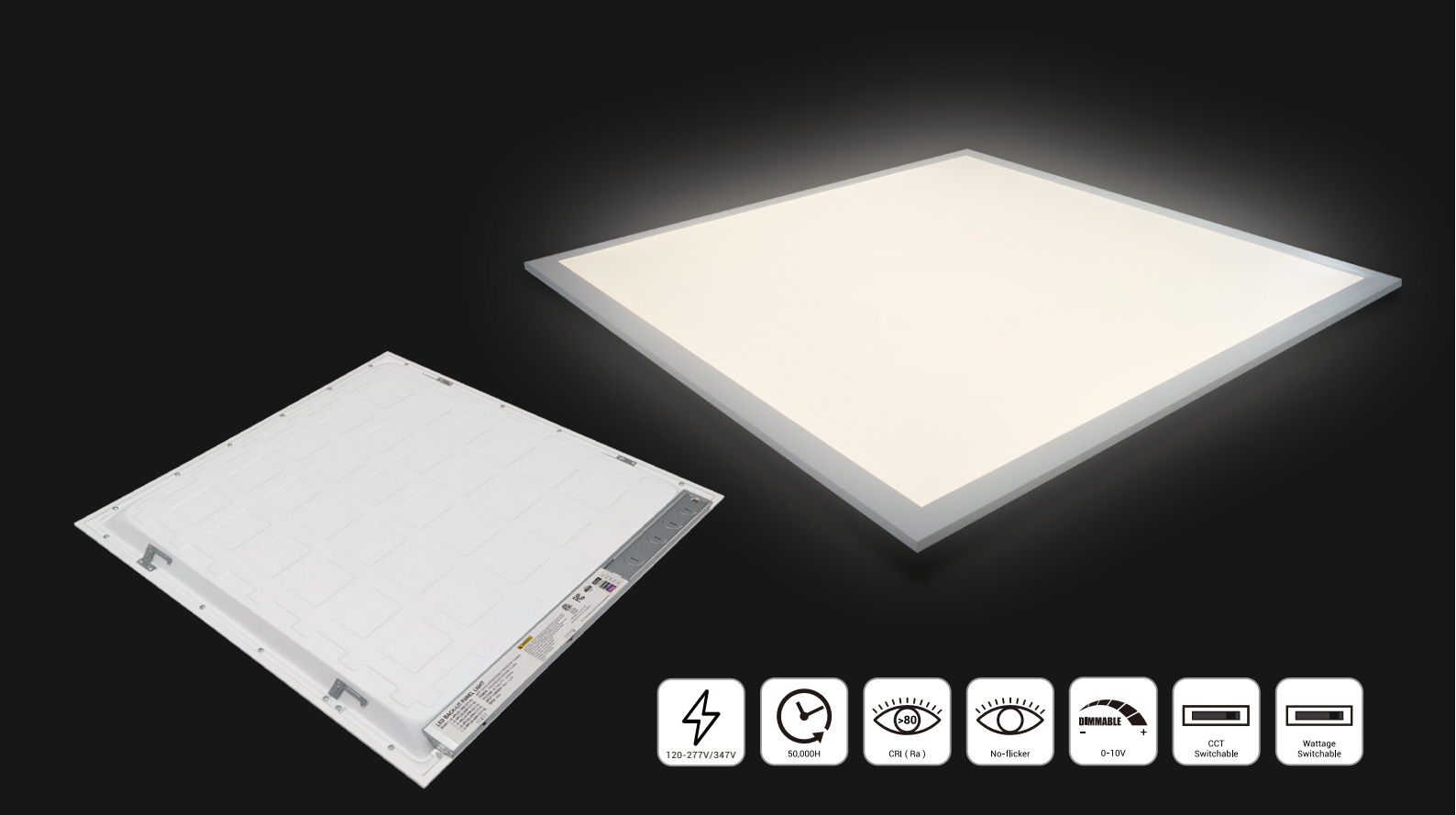
Easy installation and Linkable. With No-flicker. 5 Wattage and 5 CCT switchable.



PRODUCT CATALOG

CONTENTS

01	LED Back-Lit Flat Panel Light-5CCT/5Wattage	01/02	08	LED T8 Integrated Tube Light(SEAMLESS)-5CCT/3Wattage	13/14
02	LED Troffer Light-5CCT/5Wattage	03/04	09	LED T8 Integrated Tube Light	15
03	LED Retrofit kit-5CCT/5Wattage	05/06	10	LED T5 Integrated Tube Light(SEAMLESS)	16
04	LED Strip Light-5CCT/5Wattage	07	11	LED Shop Light-3CCT	17
05	LED Vapor Tight Light-5CCT/5Wattage	08	12	LED Shop Light	18
06	LED T8 Tube Light(4FT/G13)-5CCT/5Wattage	09/10	13	LED Grow Light	19/20
07	LED T8 Tube LIGHT(8FT/FA8)-5CCT/5Wattage	11/12	14	LED Framless Mirror Light	21/22



LED Back-Lit Flat Panel Light-5CCT/5Wattage

- 5 CCT and 5 Wattage switchable.
- The luminaire is built with the highest quality 120-277V / 120-347V drivers.
- With No-flicker, designed to reduce glare and improve light distribution through precision formed.
- Available with sensor and emergency power.
- DIMMING: 0-10V dimmable standard.
- 5 Years Limited Warranty, Rated lifespan for 50,000 hours.

· Certification:



Specification

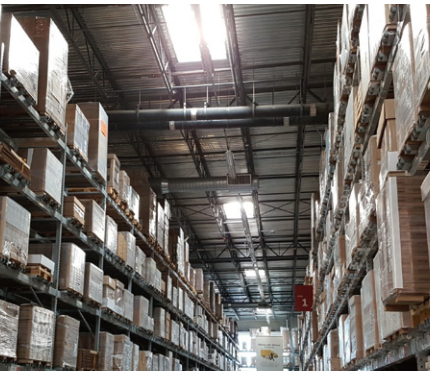
SIZE	2'X4'
Model No.	BPL24-M72W-CCT
Wattage	30/40/50/60/72 W
Delivered Lumens	3900/5160/6350/7560/9000 lm
Efficacy	130/129/127/126/125 lm/W
Color Temperature	3500/4000/5000/5700/6500 K
Input Voltage	120-277 V / 120-347V

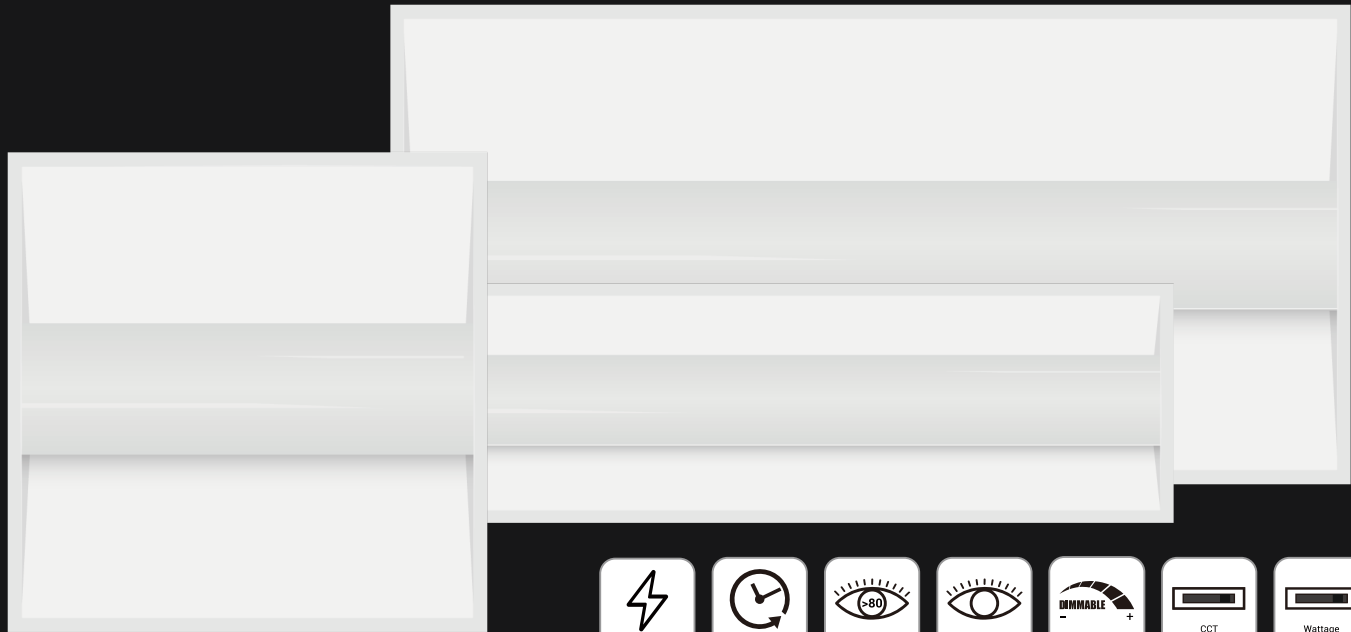
SIZE	2'X4'
Model No.	BPL24-M50W-CCT
Wattage	25/30/35/40/50 W
Delivered Lumens	3250/3900/4550/5080/6250 lm
Efficacy	130/130/130/127/125 lm/W
Color Temperature	3500/4000/5000/5700/6500 K
Input Voltage	120-277 V / 120-347V

SIZE	2'X2'
Model No.	BPL22-M40W-CCT
Wattage	15/20/25/30/40 W
Delivered Lumens	1950/2600/3250/3810/5000 lm
Efficacy	130/130/130/127/125 lm/W
Color Temperature	3500/4000/5000/5700/6500 K
Input Voltage	120-277 V / 120-347V

SIZE	1'X4'
Model No.	BPL14-M40W-CCT
Wattage	15/20/25/30/40 W
Delivered Lumens	1950/2600/3250/3810/5000 lm
Efficacy	130/130/130/127/125 lm/W
Color Temperature	3500/4000/5000/5700/6500 K
Input Voltage	120-277 V / 120-347V

Application





LED Troffer Light-5CCT/5Wattage

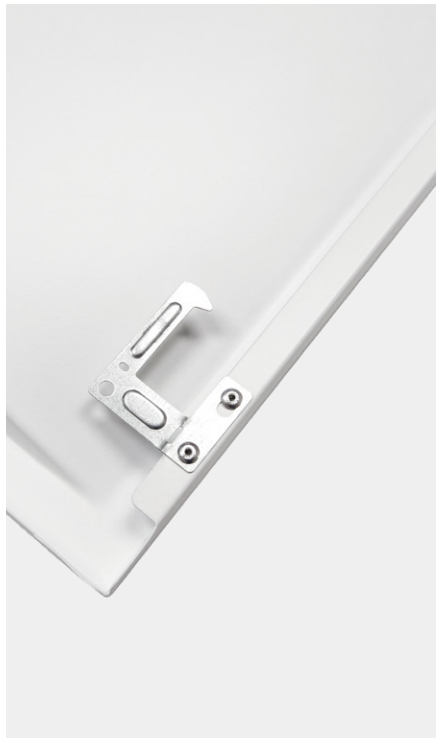
- 5 CCT and 5 Wattage switchable.
- The luminaire is built with the highest quality 120-277V / 120-347V drivers.
- With No-flicker, designed to reduce glare and improve light distribution through precision formed.
- Available with sensor and emergency power.
- DIMMING: 0-10V dimmable standard.
- 5 Years Limited Warranty, Rated lifespan for 50,000 hours.

· Certification:



ETL

DLC5.1



Specification

SIZE	2'X4'
Model No.	TRF24-M72W-CCT
Wattage	30/40/50/60/72 W
Delivered Lumens	3900/5160/6350/7560/9000 lm
Efficacy	130/129/127/126/125 lm/W
Color Temperature	3500/4000/5000/5700/6500 K
Input Voltage	120-277 V / 120-347V

SIZE	2'X4'
Model No.	TRF24-M50W-CCT
Wattage	25/30/35/40/50 W
Delivered Lumens	3250/3900/4550/5000/6250 lm
Efficacy	130/130/130/125/125 lm/W
Color Temperature	3500/4000/5000/5700/6500 K
Input Voltage	120-277 V / 120-347V

SIZE	2'X2'
Model No.	TRF22-M50W-CCT
Wattage	15/20/25/30/40 W
Delivered Lumens	1950/2600/3250/3750/5000 lm
Efficacy	130/130/130/125/125 lm/W
Color Temperature	3500/4000/5000/5700/6500 K
Input Voltage	120-277 V / 120-347V

SIZE	1'X4'
Model No.	TRF14-M50W-CCT
Wattage	15/20/25/30/40 W
Delivered Lumens	1950/2600/3250/3750/5000 lm
Efficacy	130/130/130/125/125 lm/W
Color Temperature	3500/4000/5000/5700/6500 K
Input Voltage	120-277 V / 120-347V

Application

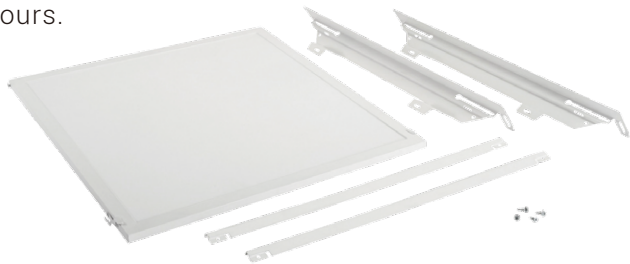




LED Back-Lit Flat Panel Retrofit Kit-5CCT/5Wattage

- Used to Upgrade existing fluorescent recessed troffer, without modifying existing fixture mounting.
- 5 CCT and 5 Wattage switchable.
- The luminaire is built with the highest quality 120-277V / 120-347V drivers.
- With No-flicker, designed to reduce glare and improve light distribution through precision formed.
- DIMMING: 0-10V dimmable standard.
- 5 Years Limited Warranty, Rated lifespan for 50,000 hours.

· Certification:    



Specification

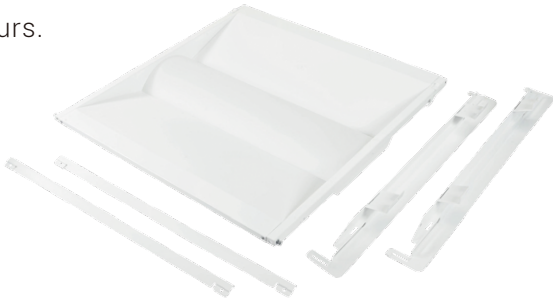
SIZE	2'X4'	2'X2'
Model No.	BPLK24-M50W-CCT	BPLK22-M40W-CCT
Wattage	25/30/35/40/50 W	15/20/25/30/40 W
Delivered Lumens	3250/3900/4550/5080/6250 lm	1950/2600/3250/3810/5000 lm
Efficacy	130/130/130/127/125 lm/W	130/130/130/127/125 lm/W
Color Temperature	3500/4000/5000/5700/6500 K	3500/4000/5000/5700/6500 K
Input Voltage	120-277 V / 120-347V	120-277 V / 120-347V



LED Center Basket Doorframe Retrofit Kit-5CCT/5Wattage

- Used for upgrade existing fluorescent recessed troffer, without modifying existing the fixture mounting.
- 5 CCT and 5 Wattage switchable.
- The luminaire is built with the highest quality 120-277V / 120-347V drivers.
- With No-flicker, designed to reduce glare and improve light distribution through precision formed.
- DIMMING: 0-10V dimmable standard.
- 5 Years Limited Warranty, Rated lifespan for 50,000 hours.

· Certification:    



Specification

SIZE	2'X4'	2'X2'
Model No.	TRFK24-M50W-CCT	TRFK22-M50W-CCT
Wattage	25/30/35/40/50 W	15/20/25/30/40 W
Delivered Lumens	3250/3900/4550/5000/6250 lm	1950/2600/3250/3750/5000 lm
Efficacy	130/130/130/125/125 lm/W	130/130/130/125/125 lm/W
Color Temperature	3500/4000/5000/5700/6500 K	3500/4000/5000/5700/6500 K
Input Voltage	120-277 V / 120-347V	120-277 V / 120-347V

LED Magnetic Retrofit kit

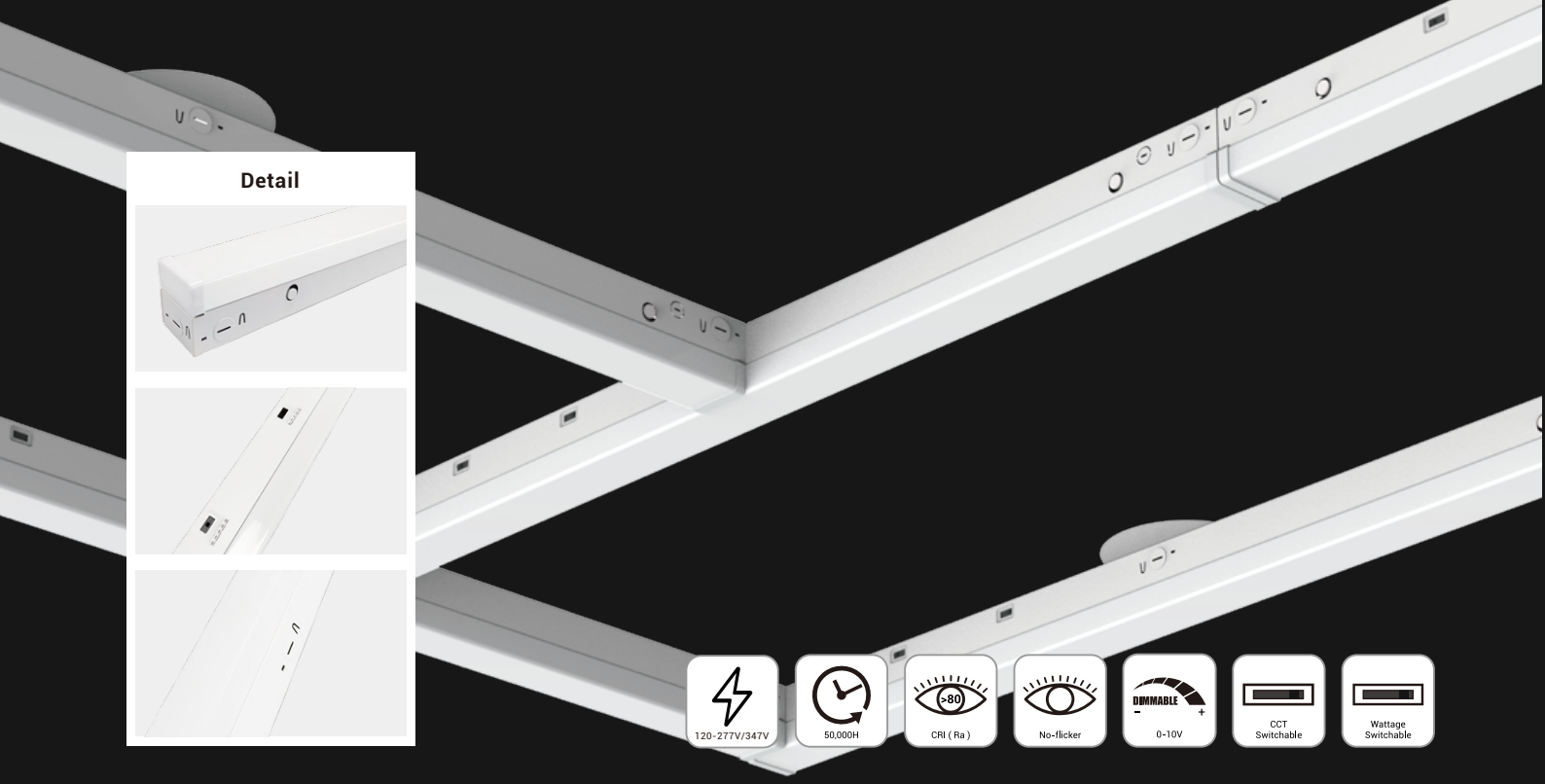
- Quick installation: LED retrofit kit has a built-in super magnet, making it fast and easy to install in any iron lampshade or Troffer without any professional tools.
- The luminaire is built with the highest quality 120-277V / 120-347V drivers.
- With No-flicker, designed to reduce glare and improve light distribution through precision formed.
- DIMMING: 0-10V dimmable standard.
- 5 Years Limited Warranty, Rated lifespan for 50,000 hours.

· Certification:    



Specification

Model No.	RTF-4FT-2-XXK	RTF-4FT-3-XXK	RTF-4FT-4-XXK
Lightbars	2 Lightbars With Driver	3 Lightbars With Driver	4 Lightbars With Driver
Wattage	48 W	72 W	96 W
Delivered Lumens	7200 lm	10800 lm	14400 lm
Efficacy	150 lm/W	150 lm/W	150 lm/W
Color Temperature	2700-6500 K	2700-6500 K	2700-6500 K
Input Voltage	120-277 V / 120-347V	120-277 V / 120-347V	120-277 V / 120-347V



LED Strip Light-5CCT/5Wattage

ETL DLC5.1

- 5 CCT and 5 Wattage switchable.
- The luminaire is built with the highest quality 120-277V / 120-347V drivers.
- With No-flicker, designed to reduce glare and improve light distribution through precision formed.
- Available with sensor and emergency power.
- DIMMING: 0-10V dimmable standard.
- 5 Years Limited Warranty, Rated lifespan for 50,000 hours.

· Certification:    

Specification

Model No.	STR-4FT-M50W-CCT	STR-8FT-M100W-CCT
Length	4FT	8FT
Wattage	25/30/35/40/50W	50/60/70/80/100W
Luminous	3750-6500 lm	6500-13000 lm
Efficacy	130-150lm/w	
Lighting Angle	180 Degree	
Input Voltage	120-277 V / 120-347V	
Color Temperature	3500/4000/5000/5700/6500K	



LED Vapor Tight Light-5CCT/5Wattage

ETL DLC5.1

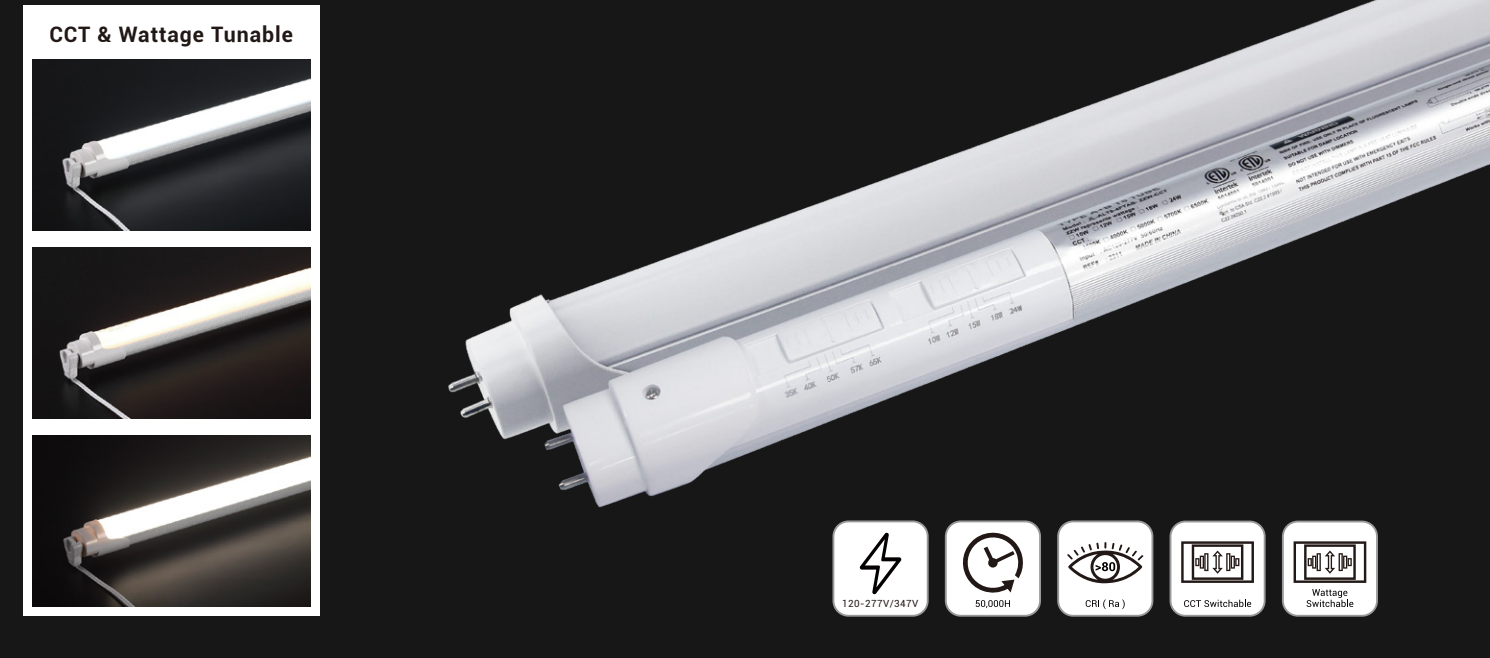
- 5 CCT and 5 Wattage switchable.
- The luminaire is built with the highest quality 120-277V / 120-347V drivers.
- With No-flicker, designed to reduce glare and improve light distribution through precision formed.
- Available with sensor and emergency power.
- Protection class: IP65
- DIMMING: 0-10V dimmable standard.
- 5 Years Limited Warranty, Rated lifespan for 50,000 hours.

· Certification:    

Specification

Model No.	VAP-2FT-M25W-CCT	VAP-4FT-M50W-CCT	VAP-8FT-M100W-CCT
Length	2FT	4FT	8FT
Wattage	12/15/18/22/25W	25/30/35/40/50W	50/60/70/80/100W
Luminous	1560-3250 lm	3250-6250 lm	6250-12500 lm
Efficacy	125-130lm/w		
Cover	Frosted		
Input Voltage	120-277 V / 120-347V		
Color Temperature	3500/4000/5000/5700/6500K		





LED T8 Tube Light(4FT/G13)-5CCT/5Wattage (Type A+B)

- Compatible with most instant- and programmed-start electronic T8 ballasts
- Bypass ballast runs on 120-277V / 120-347V voltage
- Single or double-ended wiring
- 5 CCT and 5 Wattage switchable.
- 50,000+ hour lifetime
- Suitable for dry and damp indoor locations
- Operating temperature -4°F to +113°F

LED T8 Tube Light(4FT/G13)-5CCT/5Wattage (Type B)

- Bypass ballast runs on 120-277V / 120-347V voltage
- Single or double-ended wiring
- 5 CCT and 5 Wattage switchable.
- 50,000+ hour lifetime
- Suitable for dry and damp indoor locations
- Operating temperature -4°F to +113°F

· Certification:



Specification

Model No.	ALT8-4FTAB-M24W-CCT	ALT8-4FTB-M24W-CCT
Ballast Compatibility	Type A+B	Type B
Wattage	10/12/15/18/24W	10/12/15/18/24W
Luminous Flux	1500-3050lm	1500-3050lm
Efficacy	127-150lm/w	
Input Voltage	120-277 V / 120-347V	
Color Temperature	3500/4000/5000/5700/6500 K	
Wire Connection	Single or double-ended wiring	

Installation

Type A+B		
Method	Description	Wiring Diagram
“With Existing Ballast”	Keeps fluorescent ballast in fixture, simply install in place of old fluorescent bulb. Fluorescent ballast must be on compatibility list .	
“Without Ballast” Single ended (Ballast Bypass)	Removes or bypasses the fluorescent ballast, and directly connects line voltage to just one end of the LED tube.	
“Without Ballast” Double ended (Ballast Bypass)	Removes or bypasses the fluorescent ballast, and directly connects line voltage to both ends of the LED tube.	

Type B		
Method	Description	Wiring Diagram
“Without Ballast” Single ended (Ballast Bypass)	Removes or bypasses the fluorescent ballast, and directly connects line voltage to just one end of the LED tube.	
“Without Ballast” Double ended (Ballast Bypass)	Removes or bypasses the fluorescent ballast, and directly connects line voltage to both ends of the LED tube.	

5 Wattage and 5 CCT switchable :

5 Wattage Switchable	5 CCT Switchable
Slide dial switch to get the desired wattage & color temperature.	





LED T8 Tube LIGHT(8FT/FA8)-5CCT/5Wattage (Type A+B)

- Compatible with most instant- and programmed-start electronic T8 ballasts
- Bypass ballast runs on 120-277V / 120-347V voltage
- LED light source, higher light efficiency, low light decay.
- Double-ended wiring
- 5 CCT and 5 Wattage switchable.
- Shatterproof Plastic / Anti-deformation Aluminum
- 5 Years Limited Warranty, Rated lifespan for 50,000 hours.



LED T8 Tube LIGHT(8FT/FA8)-5CCT/5Wattage (Type A+B)

- Bypass ballast runs on 120-277V / 120-347V voltage
- LED light source, higher light efficiency, low light decay.
- Double-ended wiring
- 5 CCT and 5 Wattage switchable.
- Shatterproof Plastic / Anti-deformation Aluminum
- 5 Years Limited Warranty, Rated lifespan for 50,000 hours.



Specification

Model No.	ALT8-8FTAB-M48W-CCT	ALT8-8FTB-M48W-CCT
Ballast Compatibility	Type A+B	Type B
Wattage	24/30/36/42/48w	
Color Temperature	3500/4000/5000/5700/6500K	
Luminous	3600-6050lm	
Input Voltage	120-277 V / 120-347V	
Ra	>80	
PF	>0.9	

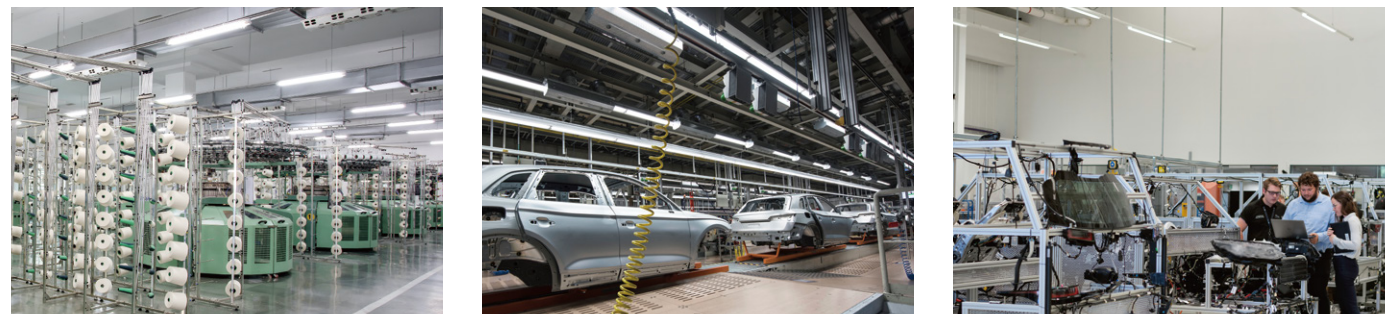
Installation

Type A+B		
Method	Description	Wiring Diagram
"With Existing Ballast"	Keeps fluorescent ballast in fixture, simply install in place of old fluorescent bulb. Fluorescent ballast must be on compatibility list .	
"Without Ballast" Double ended (Ballast Bypass)	Removes or bypasses the fluorescent ballast, and directly connects line voltage to both ends of the LED tube.	

Type B		
Method	Description	Wiring Diagram
"Without Ballast" Double ended (Ballast Bypass)	Removes or bypasses the fluorescent ballast, and directly connects line voltage to both ends of the LED tube.	

5 Wattage and 5 CCT switchable :

5 Wattage Switchable	5 CCT Switchable
Slide dial switch to get the desired wattage & color temperature.	





LED T8 Integrated Tube Light(SEAMLESS)-5CCT/3Wattage

- Easy installation:Buit-in driver and use magnet or clip for ceiling
- Seamless connection
- Runs on 120-277V / 120-347V voltage
- Shatterproof Plastic / Anti-deformation Aluminum
- 5 CCT and 3 Wattage switchable.
- 5 Years Limited Warranty, Rated lifespan for 50,000 hours.

· Certification:

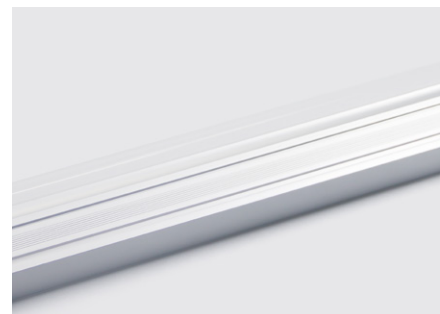
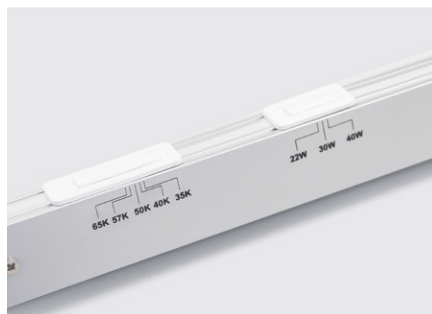


ETL

DLC5.1

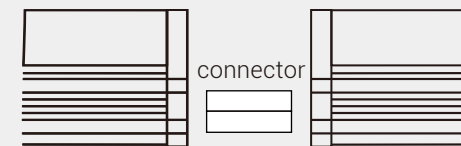
Specification

Model No.	INT-4FT-M40W-XXK	INT-8FT-M72W-XXK
Length	4FT	8FT
Wattage	22/30/40W	45/60/72W
Color Temperature	3500/4000/5000/5700/6500K	3500/4000/5000/5700/6500K
Luminous	2750-5000lm	5625-9000lm
Input Voltage	120-277 V / 120-347V	
Cover	Frosted&Clear	
Shape	Flat	



Connection Installation

Method 1 : Connector

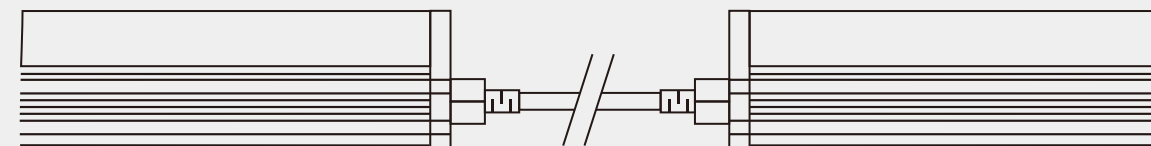


Please find the connector in the accessories bag.



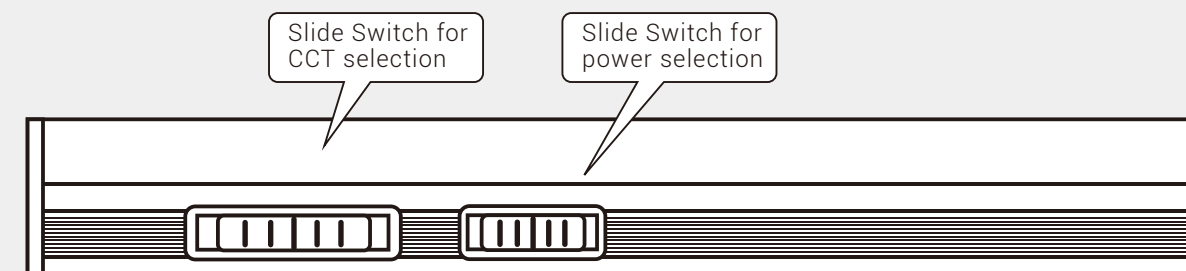
Plug the connector into the tube.

Method 2: Middle Connector



Please find the middle connector, Plug the middle connector into the tube.

Wattage & CCT Selection



For the product with Slide Switch of wattage or CCT selection, please select the wattage or CCT needed before installation.





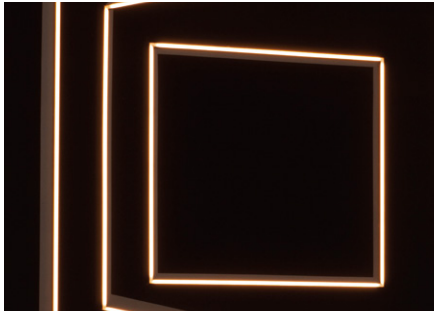
LED T8 Integrated Tube Light

- LED light source, higher light efficiency, low light decay.
- Better heat dissipation aluminum-plastic shell
- High display finger, good lighting environment.
- Runs on 120-277V / 120-347V voltage
- Longer life and higher safety.
- V-type double row chip lamp, light Angle wide 160° beam Angle, 40° more than other lamp Angle.
- 5 Years Limited Warranty, Rated lifespan for 50,000 hours.

· Certification:    

Specification

Model No.	Length	Wattage	Luminous	Color Temperature	Input Voltage	Shape
INT-2FT-15W-XXK	2FT	15W	1950lm	2700-6500K	120-277 V / 120-347V	V-Shpaed
INT-3FT-22W-XXK	3FT	22W	2860lm			
INT-4FT-22W-XXK	4FT	22W	2860lm			
INT-4FT-30W-XXK		30W	3900lm			
INT-8FT-45W-XXK	8FT	45W	5850lm			
INT-8FT-60W-XXK		60W	7800lm			
INT-8FT-72W-XXK		72W	9360lm			



LED T5 Integrated Tube Light(SEAMLESS)

- LED light source, higher light efficiency.
- Easy Installation, just use the included snap joints to hang it up.
- Plug-and-play, insert the plug to light it on.
- Runs on 85-265V voltage
- Seamless linkable.
- High quality PC material,high light transmission,bright and comfortable
- High display finger, good lighting environment.
- Longer life and higher safety.
- 5 Years Limited Warranty, Rated lifespan for 50,000 hours.

Specification

Model No.	Length	Wattage	Luminous	Color Temperature	Input Voltage
T5INT-1FT-5W-XXK	1FT	5W	500lm	2700-6500K	85-265V
T5INT-2FT-10W-XXK	2FT	10W	1000lm		
T5INT-3FT-13W-XXK	3FT	13W	1300lm		
T5INT-3FT-14W-XXK		14W	1400lm		
T5INT-3FT-15W-XXK		15W	1500lm		
T5INT-4FT-18W-XXK	4FT	18W	1800lm		





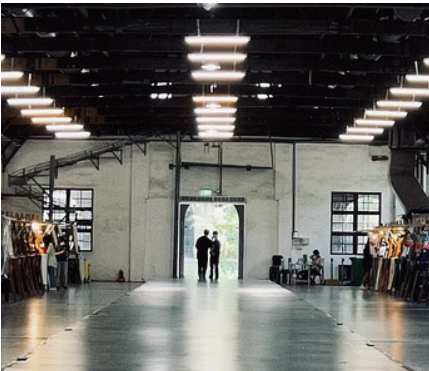
LED Shop Light-3CCT

- Easy replacement:With pull chain(ON/OFF) and power cord with plug
- Easy installation: With hanging chain and "V" hooks
- Linkable: With outlet,Easily connection
- 3 CCT switchable.
- Runs on 120-277V voltage
- Durable Smooth Edge Housing
- 5 Years Limited Warranty, Rated lifespan for 50,000 hours.



Specification

Model No.	SPT-4FT-36W-CCT	SPT-4FT-42W-CCT
Wattage	36W	42W
Luminous	3600lm	4200lm
Efficacy	100lm/w	
Power Factor	>0.9	
Input Voltage	120-277 V	
Color Temperature	3000/4500/6500K	



LED Shop Light

- Easy using: Power cord with plug and ON/OFF.
- Easy installation: With hanging chain and hooks.
- Linkable: With outlet,Easily connection.
- Runs on 108-132V voltage
- High quality PC.
- 5 Years Limited Warranty, Rated lifespan for 50,000 hours.



Specification

Model No.	SPS-2FT-18W-XXK	SPS-3FT-27W-XXK	SPS-4FT-36W-XXK
Wattage	18W	27W	36W
Luminous	1800lm	2700lm	3600lm
Efficacy	100lm/w		
Power Factor	>0.5		
Input Voltage	108-132 V		
Color Temperature	2700-6500K		





Foldable



LED Grow Light

- No UV or IR in the beam.
- Output constant current lever can be adjusted through output cable with 0-10V.
- Freely Multi-bar combination, with an easy snap on, snap-off led installation.
- Whole fixture gives high PPFD and large lighting coverage in door .
- The pure aluminium body bars are good at heat dissipation which plays an important role in uselife-span of product.
- Energy saving, long lifespan.
- Applicaon: Seed Starting, BLOOM, VEG

LED Grow Light

- No UV or IR in the beam.
- Output constant current lever can be adjusted through output cable with 0-10V.
- Easy to install and operate.
- Energy saving, long lifespan.
- Light is so uniform, safe to eyes.
- Instant start, NO flickering, NO humming.
- Can be connected in parallel, according to customer requirements.
- Applicaon: Green house / Ver cal farming / Marijuana cultivation

Specification

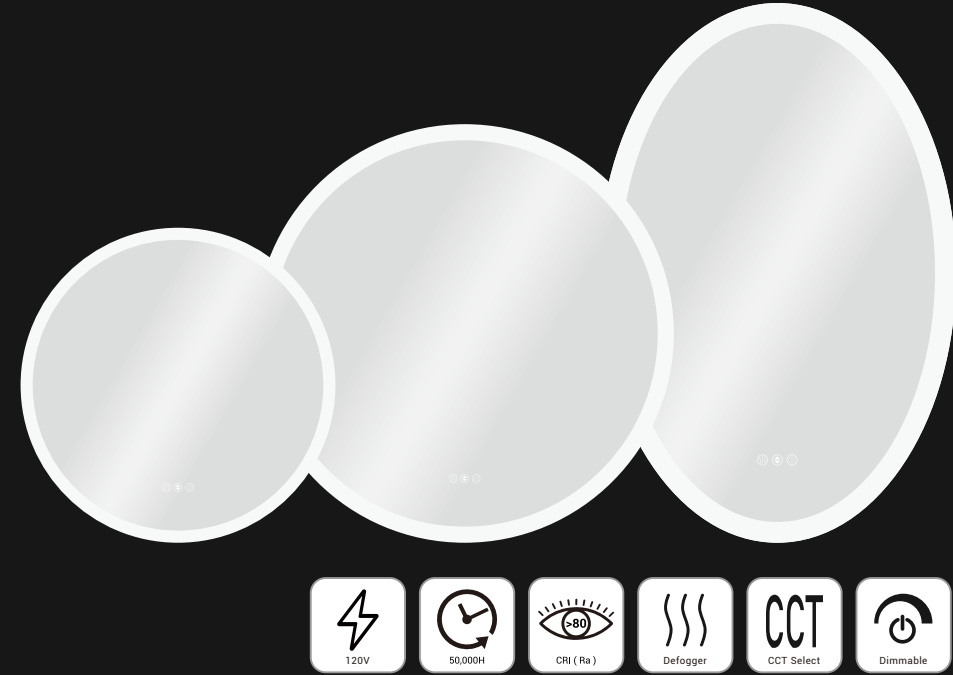
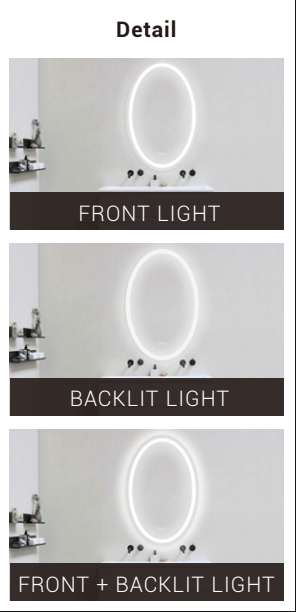
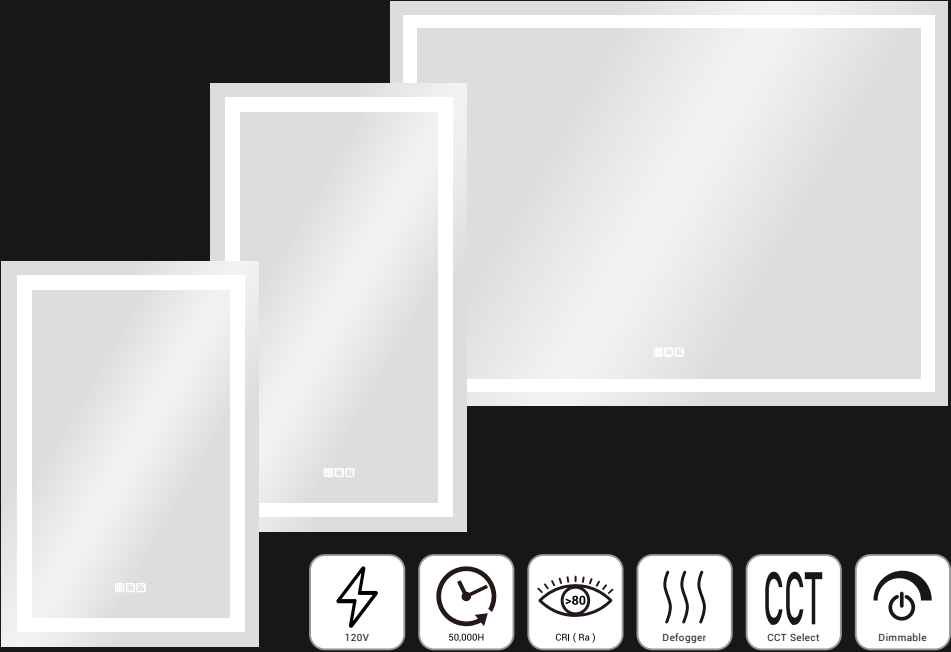
Model No.	GR-720W-6P1
Input voltage	120-277 V
Input power	720W
PPF	1728 μmol /S
PPE	2.4 μmol/J
Viewing Angle	120°
Spectrum	Full Spectrum
CRI	>80(white)



Specification

Model No.	GR-720W-6D1
Input voltage	120-277 V
Input power	720W
PPF	1728 μmol /S
PPE	2.4 μmol/J
Viewing Angle	120°
Spectrum	Full Spectrum
CRI	>80(white)





MF Series - LED Framless Mirror Light

- Dimmable-Stepless dimming
- Light Color temperatures adjustment
- Anti-Fog function & 1-hour delayed shut-off
- CRI≥80, restore true color and image
- Environmental friendly glass, shatterproof, safety
- Plug in or hardwired to a wall switch
- Outage memory function
- ETL certification

MY Series - LED Framless Mirror Light

- Dimmable-Stepless dimming
- Light Color temperatures adjustment
- Anti-Fog function & 1-hour delayed shut-off
- CRI≥80, restore true color and image
- Environmental friendly glass, shatterproof, safety
- Plug in or hardwired to a wall switch
- Outage memory function
- ETL certification

Specification

Fixture Type	MF1	MF2	MF3
Input voltage	120V	120V	120V
Kelvin	3000/4000/5000K	3000/4000/5000K	3000/4000/5000K
CRI	80	80	80
Dimmable	YES	YES	YES
Lighting Style	FRONT LIGHT	BACKLIT LIGHT	FRONT + BACKLIT LIGHT
Location	DAMP	DAMP	DAMP
Dimensions	W:24"-82" H:24"-48" (24"x36"/24"x42"/24"x48"/46"x42"/48"x42"/58"x42")		

Specification

Fixture Type	MY1	MY2	MY3
Input voltage	120V	120V	120V
Kelvin	3000/4000/5000K	3000/4000/5000K	3000/4000/5000K
CRI	80	80	80
Dimmable	YES	YES	YES
Lighting Style	FRONT LIGHT	BACKLIT LIGHT	FRONT + BACKLIT LIGHT
Location	DAMP	DAMP	DAMP
Dimensions	W:24"-82" H:24"-48" (24"x36"/24"x42"/24"x48"/46"x42"/48"x42"/58"x42")		

