

PLC Smart Switch



Getting Started Guide

Product Introduction

Welcome—and thank you for purchasing the PLC Smart Switch.

This product can control the lamp turn on/off, brightness, color temperature and custom lighting mode.

We hope you enjoy the convenience of this!

Product Parameter

PLC Smart Switch

Model: JL-PLC400W-120

Wiring: Single Pole

Rating: 120-277Vac 50/60Hz

Control: Touch-Tone

Maximum Load : $\leq 400W / 3.3A$

Wire Wiring: Neutral/Single Live

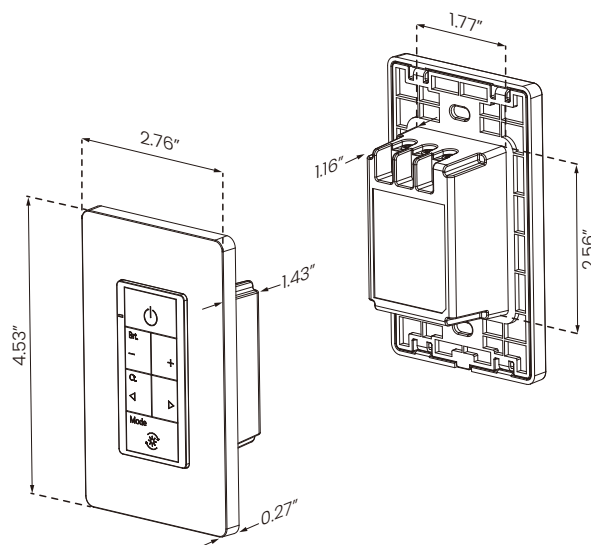
Dimensions: 2.76"x4.53"x1.43"

Material: PC (Flame Retardant Material)

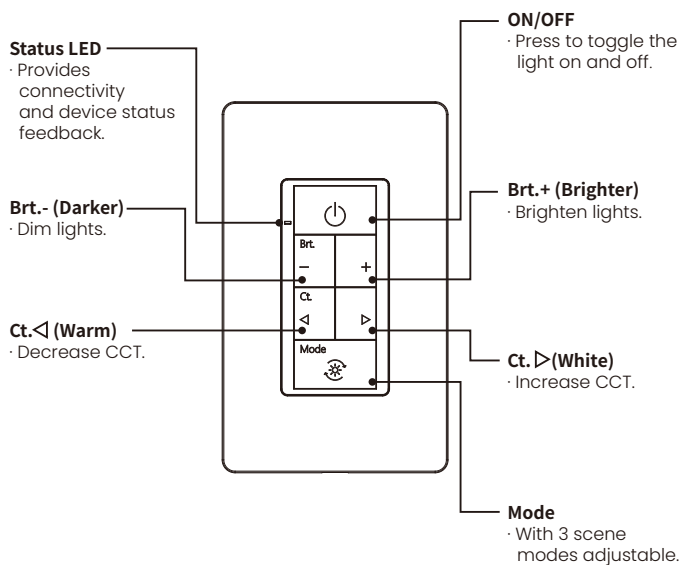
Working Temperature: -20°C~+40°C

1

Dimensions



Using Controls



2

Installing Switch

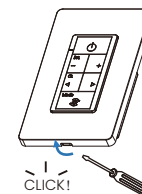


WARNING: SHOCK HAZARD

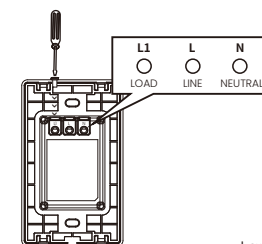
May result in serious injury or death. Turn off power at circuit breaker or fuse before installing.



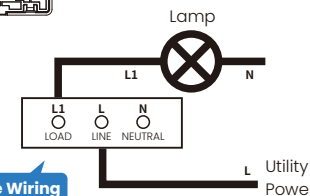
The Switch is capable of being mounted using most standard stud brackets, or mounting boxes. With the wall mounting box and electrical wiring in place, the Switch can be installed.



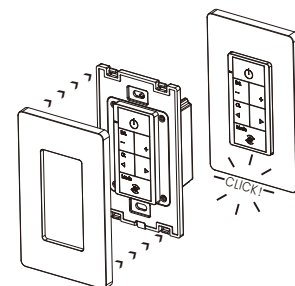
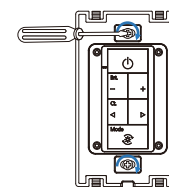
- 1 Open the front cover with a small flat head screwdriver.



- 2 Connect the wire to the terminals as needed and tighten the screws. It is necessary to connect all wires to the appropriate connectors.



- 3 Fix the switch chassis to the mounting bracket or box using supplied screws as shown after wire connected.



- 4 Reattach the face plate securely.



Power-on: The Status LED colors will change in sequence (Green/Red/Blue), and then turn off after 3 seconds, when powering on for the first time.

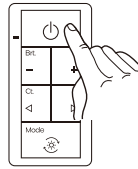
3

Using Switch

ON/OFF (ON/OFF Button)

Press to toggle the lights ON or OFF.

Press ON/OFF button to turn on the lamp when it is off.
Press ON/OFF button to turn off the lamp when it is on.

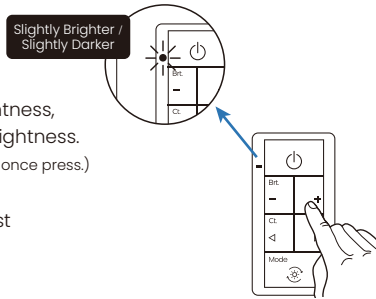


The lamp has slow start and slow off functions when it is turned on and off.

Adjust Brightness (Brt. Button)

■ Press Brt+ to turn up the brightness,
Press Brt- to turn down the brightness.
(Brightness in 20 steps, step by each once press.)

■ Press and hold Brt+/- to adjust
the lights continually.
(Brightness range: 5%-100%)

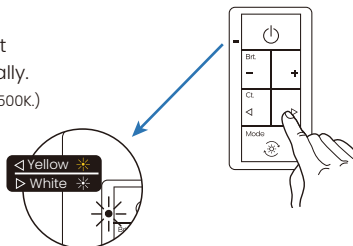


Automatic memory after each adjustment, when next turned on, the light automatically goes into the memorized power.(See "Setup Mode")

Adjust CCT (Ct. Button)

■ Press Ct.< to adjust the light Warm White,
Press Ct.> to adjust the light Cool White.
(The Color Temperature in 20 steps, step by each once press.)

■ Press and hold Ct.</> to adjust
the Color Temperature continually.
(The Color Temperature range: 2700K-6500K.)

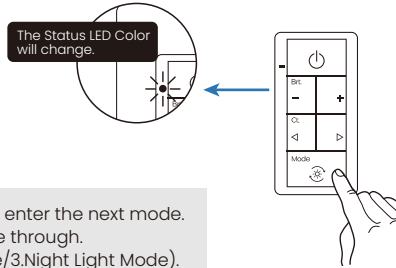


Automatic memory after each adjustment, when next turned on, the light automatically goes into the memorized Color Temperature.(See "Setup Mode")

Change Scene Modes (Mode Button)

■ Press Mode button to turn on the lamp, it will enter the first mode.
(The Mode button has the lamp Turn-On function.)

■ Changing to the next
mode when pressing the
button again.



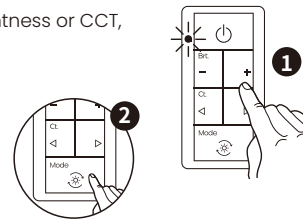
Each time it is pressed, it will enter the next mode.
There are three modes cycle through.
(1.Work Mode/2.Leisure Mode/3.Night Light Mode).

No.	Mode	Status LED Color	Brightness	CCT
1	Work Mode	Cyan	100%	5000K
2	Leisure Mode	Blue	50%	3500K
3	Night Light Mode	Purple	5%	2700K

Setup Mode

■ Press Brt. or Ct. button to adjust Brightness or CCT,
the Status LED will flash.

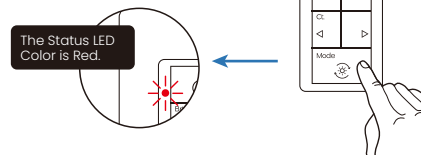
■ Press Mode button at this time,
will save the brightness and CCT to
the current mode.



Factory Default Reset

■ Press and Hold the Mode button for **3 seconds**.

■ The status light will turn Red,
and the device will reset.



Important Notes:

- For indoor use only.
- Operate between -4 °F (-20 °C) and 104 °F (40 °C).

Status LED

*** Provides connectivity and device status feedback.**

Status LED Activity	STATUS
Red/Green/Blue-change in sequence	Starting
Solid(the Color of the Mode)	In corresponding mode
Flashing	Waiting to be saved
Slightly Darker (the Color of the Mode)	Press "Brt. -" button
Slightly Brighter (the Color of the Mode)	Press "Brt. +" button
Yellow	Press "Ct. <" button
White	Press "Ct. >" button
Red	Has been Reset
Off	Light Turned off

Can be used with Kinlight Technology Product:

· JL-INT-2FT-PLC15W-CCT · JL-INT-4FT-PLC30W-CCT ·

· JL-STR-4FT-PLC50W-CCT · JL-STR-8FT-PLC100W-CCT ·

· JL-VAP-2FT-PLC25W-CCT · JL-VAP-4FT-PLC50W-CCT · JL-VAP-8FT-PLC100W-CCT ·

· JL-BPL24-PLC72W-CCT · JL-BPL22-PLC40W-CCT · JL-BPL14-PLC40W-CCT ·

· JL-TRF24-PLC50W-CCT · JL-TRF22-PLC40W-CCT · JL-TRF14-PLC40W-CCT ·

Important notes:

- The installation process of this product involves strong electricity and must be installed by professionals in accordance with electrician specifications and product instructions.
- Please disconnect the power supply before installation, replacement or disassembly.
- This product is a wireless communication product. Please do not place the product in a metal box to prevent the signal from being blocked.
- The ambient temperature range is -20°C to +40°C.
- Avoid use in chemical or flammable gases, saturated salt spray, prolonged high humidity or other abnormal environments.
- It should be installed in a place free from rain and snow, and there should be no gas and dust in the medium that can corrode metal and damage insulation, and there is no risk of explosion.
- Do not attempt to repair this product yourself. Repairs should be performed by authorized professionals.